

## Document Management – Siemens VDO Documentum Solution

**AREA OF COMPETENCES:** Enterprise Business Intelligence

**INDUSTRY:** Microelectronics

### CHALLENGE



This challenge can be broken into two development waves in relation to the two divisions the solution addressed. The first development aspect concerned customizing and enhancing the features of the award winning Documentum platform.

Siemens VDO Automotive wanted to customize the productive environment of Documentum according to its internal needs and coordinate this upgrading effort with mass scale deployment of the Documentum solution in various remote locations. Having achieved success in supporting Documentum with its new developed features, a second challenge was building a Configuration Management, Requirements Management, and Production Assistant tool integrating everything from the basic engineer / tester up to the management and sales support teams. A strong solution was required to support the wide personnel range at Siemens, taking care of R&D and Production in various fields of the Automotive Industry.

### SOLUTION

Concerning the first development wave :



- Configuration Editor - Developed as the first layer of a complete document management customization solution based on the Documentum platform, this editor provides the entire tool for creating the configuration files for all the components and dialogues used in the DMS platform.
- Find, Properties, Security Components - Part of the customization solution for the DMS system, these components are a complete rewrite of Documentum's original ones, providing additional functionalities and end user easiness.

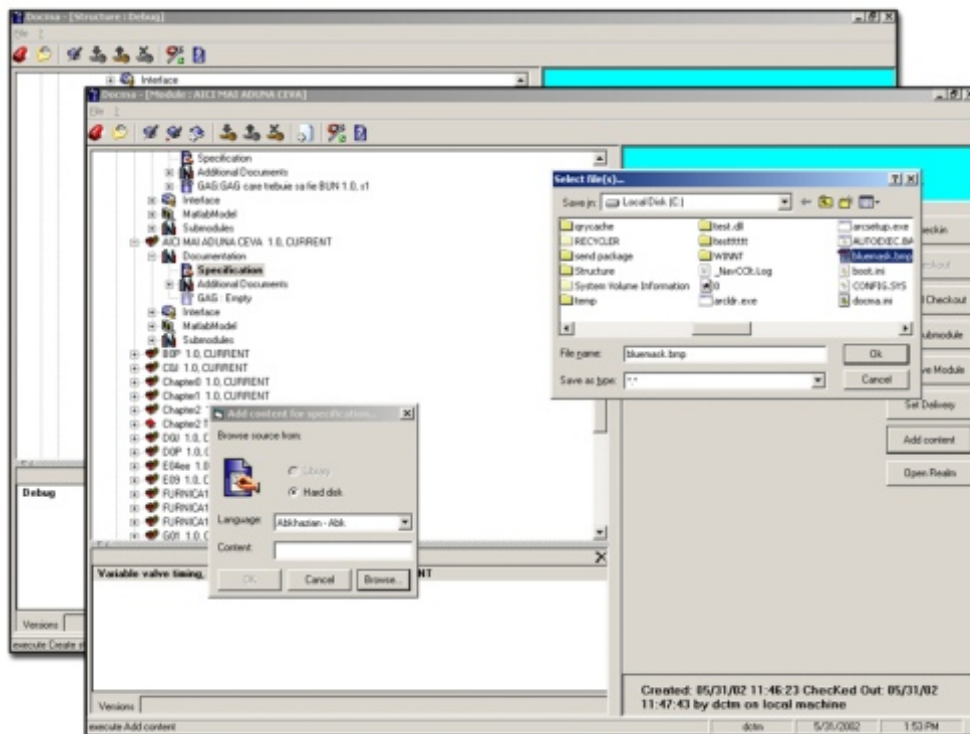
- MS Office Integration - New generation of components used in various business related document management processes, this project provides automated integration with MS Office under all versions of the software and all versions of the Windows OS. Digital documents are automatically processed using the appropriate MS tool (Word, Excel, Access, and PowerPoint) and added in the right part of the DMS.

- User Management Tools – After deploying all the components and platforms at the enterprise level, it soon became obvious that managing thousands of profiles and configurations for all the users across Siemens VDO Automotive will be quite difficult. Therefore, we developed a completely integrated workflow processing system, which allowed administrators to roll out new software worldwide in a couple of hours instead of days or even weeks.

- Workflow Infrastructure - After analyzing the business-logic generated workflows inside the organization, there emerged the need for a tool allowing integration, implementation and modeling of the workflows inside the document management platform. We solved the situation by implementing a workflow management system with rights, automatic distribution and electronic signatures.

Regarding the second development challenge :

- Docma I – Enterprise-scale project based on the leading Documentum platform, developed for use by the entire company. It replaced a complex DMS due to latter's lack of features, flexibility and power. The product implements all document management features required by a modern enterprise, mixed with complete business logic specific to Siemens VDO Automotive.
- Docma II – The second version of Docma offers tighter integration with other tools used by Siemens VDO Automotive inside their work processes.
- Docma I/II – This software evolved across almost one year and addresses many of the aspects of a Document Management/Workflow Processing environment. It is a tool that can be both used as User Application and integrated as middle tier into other applications, providing an I/O of data for dedicated high technical development environment or purely management reporting forms.



## ABOUT OUR CLIENT

Siemens VDO Automotive is an internationally leading automotive supplier of electronics, electrical systems and mechatronics. The company manufactures a comprehensive spectrum of products relating to the drivetrain, engine management electronics and fuel injection that simultaneously improve engine performance and reduce emissions.